

!! 山火事は、たばこの火からたき火から!!

A forest fire breaks out of a cigarette butt or a bonfire.

埼玉県鳥獣保護区等位置図

A Map of Wildlife Protection Area in SAITAMA Prefecture

(平成 29 年度)

!! 注意一秒・事故一生!!

A care for a second prevents a man from an accident.caused injury for life.

Table with 4 columns: 事務所名 (Office Name), 所在地 (Location), 管轄区域 (Jurisdiction Area), 電話番号 (Phone Number). Lists various environmental management offices across Saitama Prefecture.

Legend (凡例) table with 6 columns: Symbol, Name, Description. Defines symbols for National Wildlife Protection Area, Prefectural Wildlife Protection Area, Special Protection Area, etc.

Scale and Unit Conversion table (凡例) with 2 columns: Unit, Conversion Factor. Shows distances in meters and kilometers.

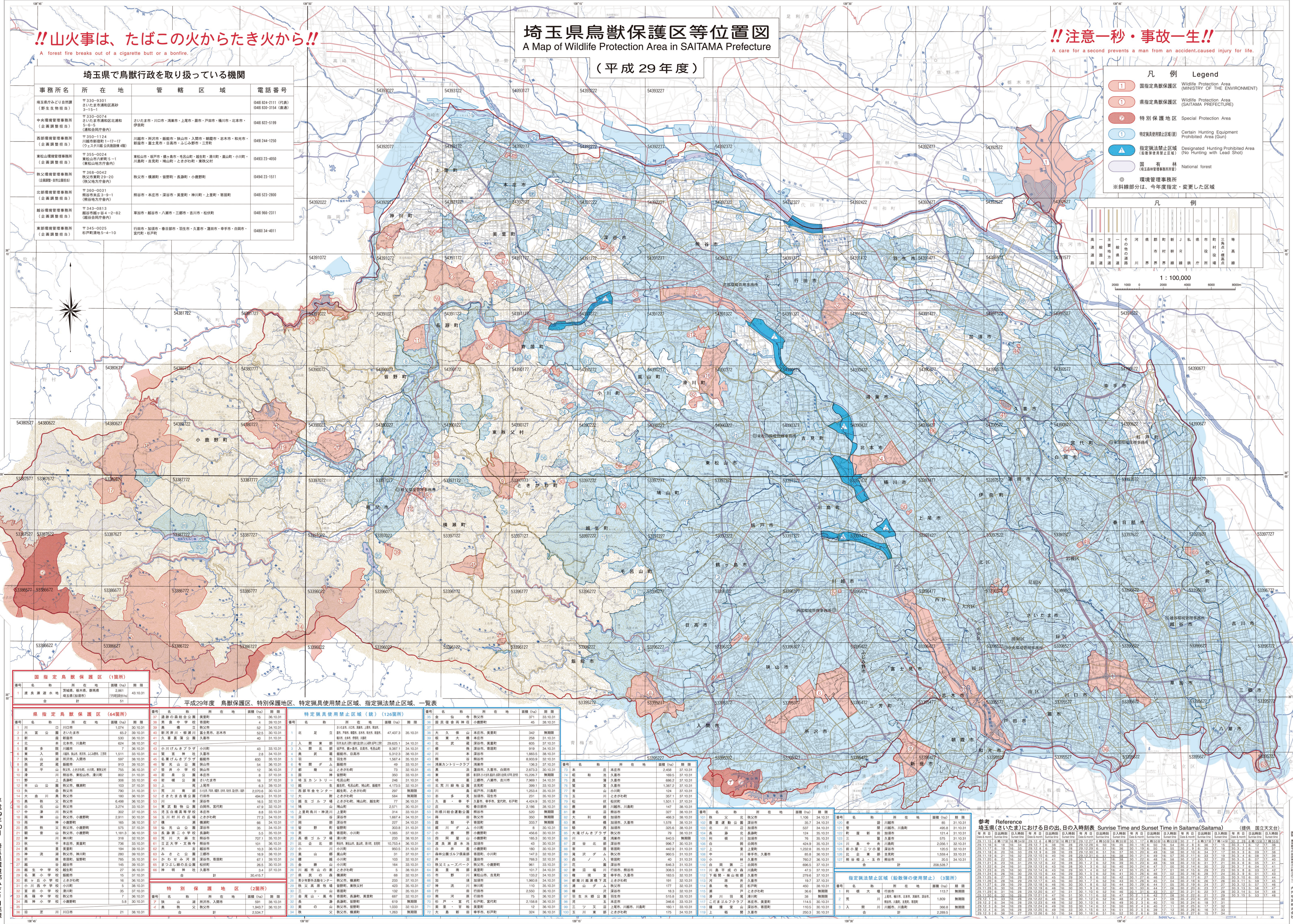


Table titled '国指定鳥獣保護区 (1箇所)' (National Designated Wildlife Protection Area (1 area)).

Table titled '県指定鳥獣保護区 (64箇所)' (Prefectural Designated Wildlife Protection Areas (64 areas)).

平成29年度 鳥獣保護区、特別保護地区、特定猟具使用禁止区域、指定猟法禁止区域、一覧表

Main list table for Wildlife Protection Areas, Special Protection Areas, etc. for Heisei 29. It contains multiple columns for area name, location, area type, and date.

Table titled '指定猟法禁止区域 (鉛散弾の使用禁止) (3箇所)' (Designated Hunting Prohibited Areas (Lead Shot Use Prohibited) (3 areas)).

Table titled '参考 Reference 埼玉県(さいたま)における日の出、日の入時刻表 Sunrise Time and Sunset Time in Saitama (Saitama)'.

平成 29 年 10 月 埼玉県環境部 自然環境課